



THE PIONEER

RURAL & RESIDENTIAL
PROPERTY

Stroud Flour Mill

DENISE HAYNES - 'R & R' RURAL AND RESIDENTIAL PROPERTY

Once upon a time we had a flour mill at Stroud, situated on the banks of the aptly named Mill Creek. If you look to your right as you turn into Mill Creek Road today you can pick out the levelled land on the creek bank where the mill once stood. Below is an advertisement placed in The Maitland Mercury when the mill went up for sale in 1865.

STROUD MILL, and 29 ACRES OF LAND, with other valuable improvements.

DODDS & CO. have received instructions to sell by public auction, at Eckford's family Hotel, West Maitland, on Monday the 30th day of January at 12 O'Clock.

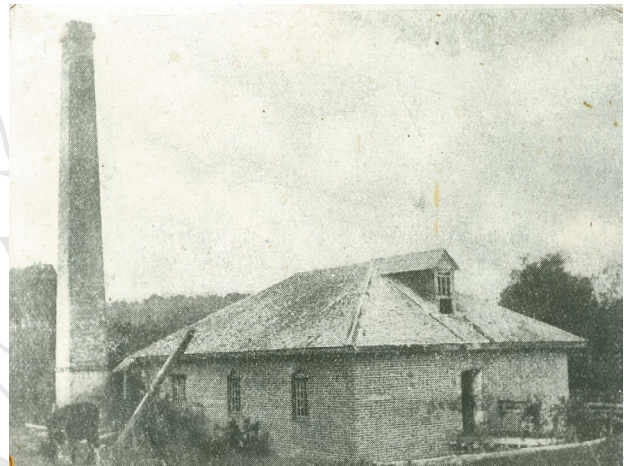
That magnificent MILL at Stroud, with the whole MACHINERY APPARATUS, 29 ACRES of excellent LAND, HOUSES and other ERECTIONS, and valuable IMPROVEMENTS upon the lands.

The Flour Mill is built with brick, three stories, 49 feet x 32, there is a twelve horse power water wheel, two pair four feet French burr stones, flour and smutting machines, sack cant mill bills, beam scales and weights.

One 14 horse horizontal high pressure steam engine, worked by 20 horse boiler, circular saw, benches, and every requisite for preparing timber for the market.

The IMPROVEMENTS upon the land comprise –

- A four roomed brick cottage, shingled, with shop, pantry etc
- A newly erected brick dwelling house, containing dining room and two bedrooms.
- A slab kitchen, 19 feet by 12-6.
- A slabbed four stalled stable, 24 feet 6 by 14-6
- A stone and brick siloe, 25 feet square, with carpenter's shop and bacon house attached.
- Eight newly erected huts for workmen, and two old huts for the same purpose.



- Shingled shed, sawpits etc etc
- The land measures 29 acres, more or less.

This really magnificent property is situated at North Stroud, at Mill Creek. There is a good road from Raymond Terrace to Stroud, and along to New England, Manning, Port Macquarie etc.

This is the only flour mill in the district and an enterprising proprietor or tenant could command a lucrative business by the flour and saw mills; and an excellent butchering trade could be carried on, as there is every accommodation for this branch of business. Altogether this is a most desirable property and such as to be met with on rare occasions only.

Intending purchasers are earnestly invited to inspect the property before the day of the sale, and satisfy themselves as to its value and capabilities. They will find that any description which can be given in an advertisement falls far short in enumerating the many advantages this property possesses.

MAITLAND MERCURY 1865